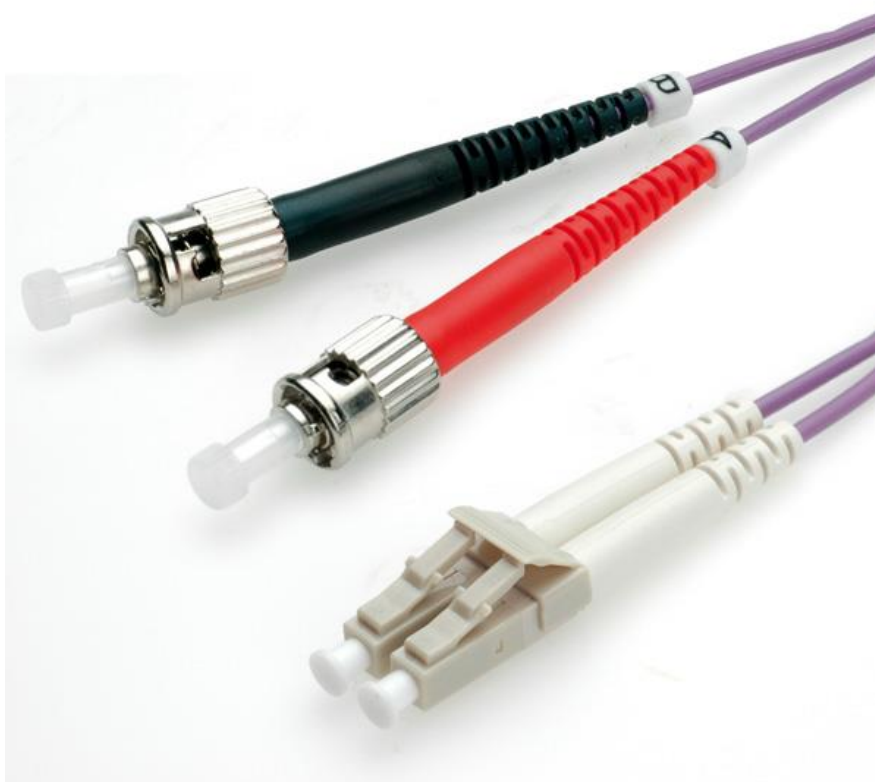




Datenblatt - Fiche technique - Data sheet

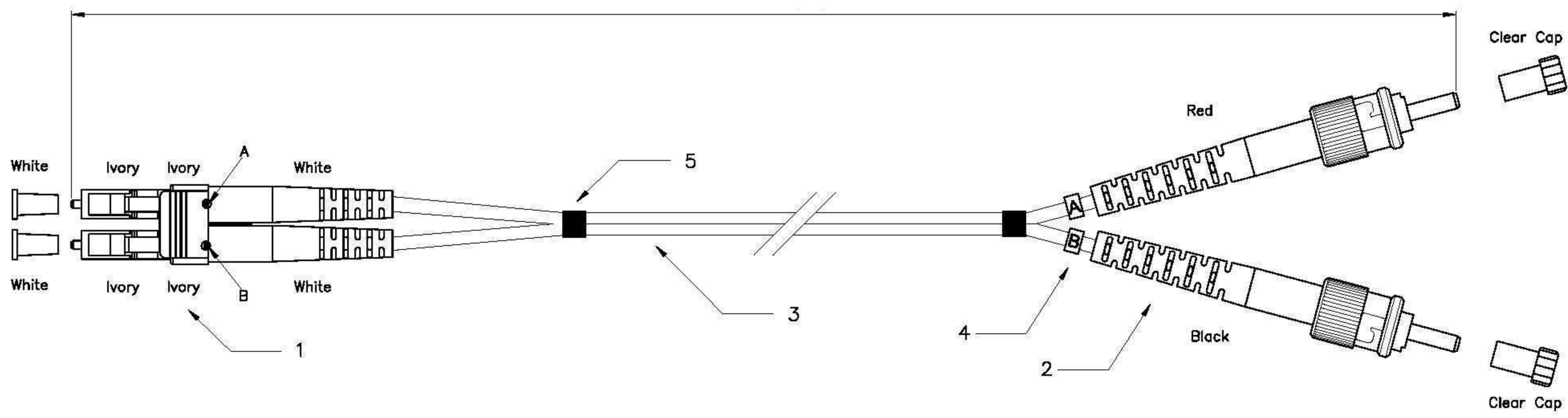
21.15.8770



ROLINE LWL-Kabel 50/125 μ m OM4, LC/ST, violett, 0,5m

ROLINE Câble FO 50/125 μ m, LC/ST, OM4, violet, 0,5m

ROLINE Fibre Optic Jumper Cable, 50/125 μ m, LC/ST, OM4, purple, 0.5 m



Specification:

1. Connector Type : LC Multimode
2. Connector Type : ST Multimode
3. Cable Type :
 3-1 Zipcord Cable, ø2.0mm, 50/125um Multimode. (OM4 Corning Fiber)
 3-2 Calbe Jacket : Purple Color, PVC Material.
4. Cable Marker
5. Shrink Tube

Performance:

- a. Insertion Loss : <0.5 dB
- b. Fiber Extention : $-0.05\mu\text{m} < H < +0.05\mu\text{m}$
- c. ø1.25mm Ferrule End-face Radius : $7 < R < 25\text{mm}$
 ø2.5mm Ferrule End-face Radius : $8 < R < 25\text{mm}$
- d. Apex Offset : < 50um
- e. Increase in insertion loss after 500 mating : 0.2 dB Max
- f. Operating Temperature : -20° to $+70^{\circ}$
- g. Storage Temperature : -40° to $+80^{\circ}$
- h. Bending radius: 0.5~1m : 90mm, 2~3m : 80mm, 5~10m : 70mm

Item No.:	21.15.8770	0.5m
Item No.:	21.15.8771	1.0m
Item No.:	21.15.8772	2.0m
Item No.:	21.15.8773	3.0m
Item No.:	21.15.8775	5.0m
Item No.:	21.15.8778	10.0m

GENERAL TOLERANCE OF DIMENSIONS X.XXX ±0.005 X.XX ±0.05 X.X ±0.1	DRAWING	12.APR.2011	ZCY	Rotronic Co., Ltd.					
	CHECK	12.APR.2011	YTY						
	APPROVAL	12.APR.2011	FRANK						
		DATE	NAME						
SCALE	1/1 (A4)	UNIT	mm	ROLINE F. O. Cable, LC-ST, OM4					
				<table border="1"> <tr> <td>DRAWING CLASSIFICATION</td> <td>S</td> <td>SHEET</td> <td>1 OF 1</td> <td></td> </tr> </table>	DRAWING CLASSIFICATION	S	SHEET	1 OF 1	
DRAWING CLASSIFICATION	S	SHEET	1 OF 1						